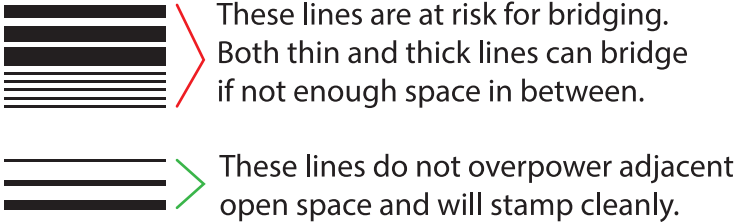
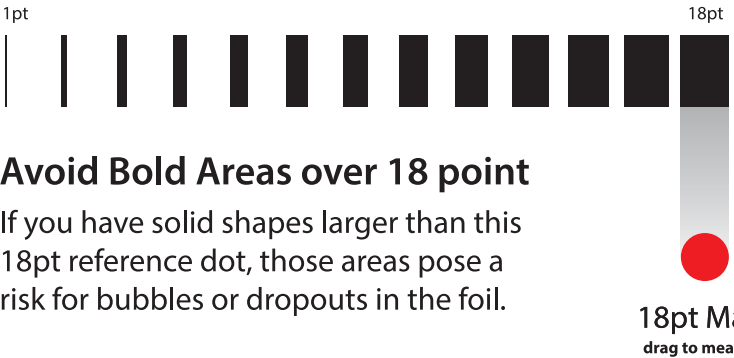


Clean Line Weights



Line Weight Range

We can typically stamp clean lines from 1pt to 18pt. 18pt is the functional max boldness for line or solid.



Avoid Bold Areas over 18 point

If you have solid shapes larger than this 18pt reference dot, those areas pose a risk for bubbles or dropouts in the foil.

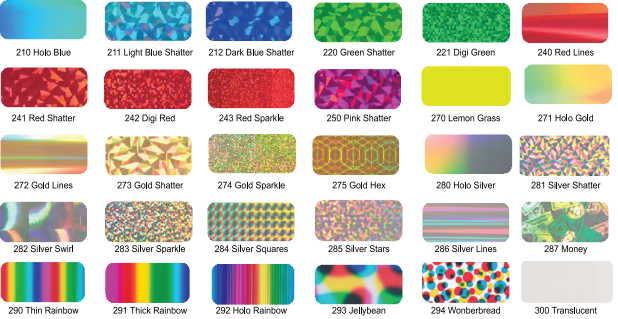
Stampable Area

Is the total amount of foil coverage per layer/die. Foil coverage can not exceed 7 sq/in per Layer

Base Plastic Foils

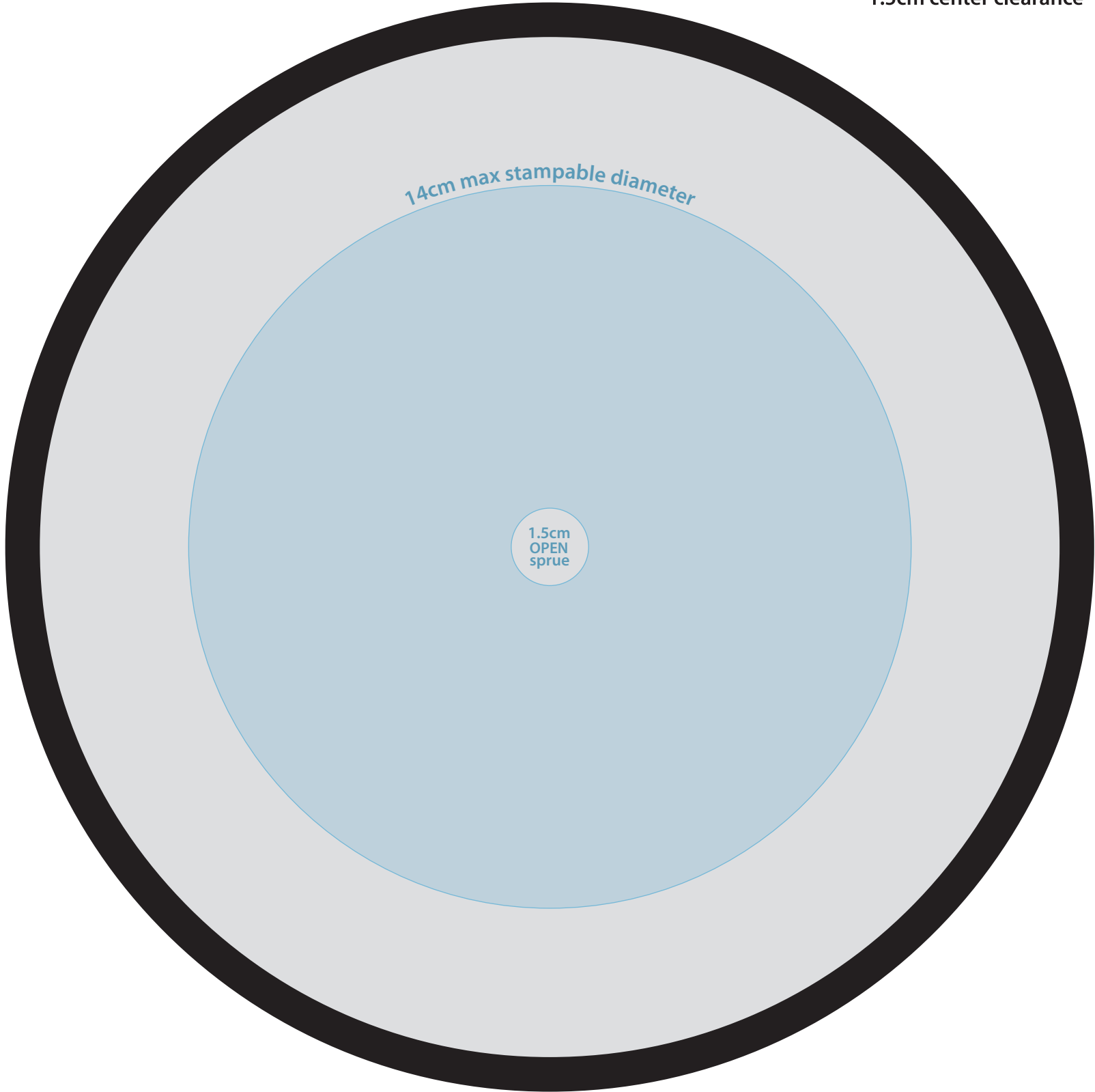


Premium Plastic Foils (Includes all Base foils)



Custom Stamping Template

21.1cm disc shown
14cm stampable diameter
1.5cm center clearance



Double and Triple Stamping

Up to 3 dies can be precision aligned for a fantastic multi-foil, multi-color effect. Our industry-leading multi-foil stamping process allows far greater creative flexibility than ever before within the classic hotstamping format.

Please Note, additional die charges and stamping fees will apply.

Follow the tips below for clean-stamping text that retains your intended design.







“Outline” Your Fonts



If your design uses fonts, your final prep should include “Outlining” type. This changes your font-dependent editable text into vector shapes. To outline your type for stamping, use the **Type > Create Outlines** menu item on all text.

Font Choice Tips for Readable Small Text

We recommend no smaller than 10pt text for readability and clean lines.

		Thin lines in close proximity will bridge together and fill gaps. These fonts would lose definition and stamp too bold.
		Thin lines and decorative gaps may cause pressure dropouts. These fonts thinner lines would drop, unless stamped too bold.
		Smaller fonts should have an even line width and clear definition.

Use of the Following is Prohibited
-MVP, Axiom, or Streamline Logos
-Flight Numbers or Names of Molds

  **Save & Upload**

Your custom stamp order form at

mvpdiscsports.com/orders

- ☒ Lines within spec (1pt - 18pt)
- ☒ Solid areas within spec (18pt max)
- ☒ Fonts Outlined (no editable text)
- ☒ Fonts clear and legible (10pt+)